



INDIAN SCHOOL AL WADI AL KABIR

DEPARTMENT OF EVS [2023 – 2024]

LESSON: PLANTS AND THEIR CARE

WORKSHEET 1

RESOURCE PERSON: Ms. Bibi Khuteja

NAME: _____ CLASS: IV SEC: _____ DATE: _____

I. Read the given clues and give one word for the following.

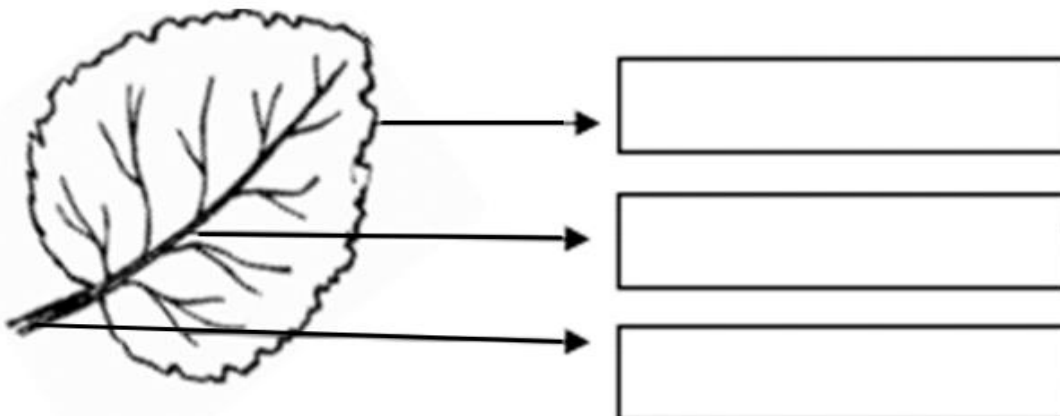
- The thin, flat, green part of a plant that is attached to the branch or stem. _____
- The part of the plant below the surface of the Earth. _____
- The part of the plant that grows vertically upwards and bears branches, leaves, flowers and fruits. _____
- The stems of some plants grow below the ground and store food. Some examples are ginger, potato and onion. _____

II. Match the following columns.

	Column – I		Column – II
i	apple tree	a.	flowering tree
ii	fir	b.	fruit tree
iii	muskogee	c.	common tree
iv	eucalyptus	d.	tree grows in hilly areas

Ans: i: _____ ii: _____ iii: _____ iv: _____

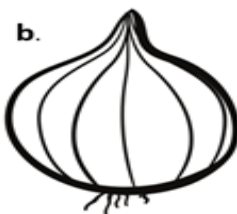
III. Label the different parts of a leaf in the diagram given below.



IV. Given below are some application-based questions. Think well and answer them.

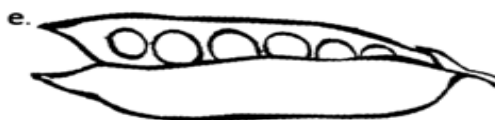
1. Ann's mother prepared a dish for her using a carrot, onion, cabbage, cauliflower, pea seeds and tomato. Colour and name the part of the plants that are used in the dish.













2. Piyanshu and his family are visiting Darjeeling and Ooty, famous hill stations in India. They are enjoying the winter season and cold weather. Identify the trees that they will be able to see in these places.

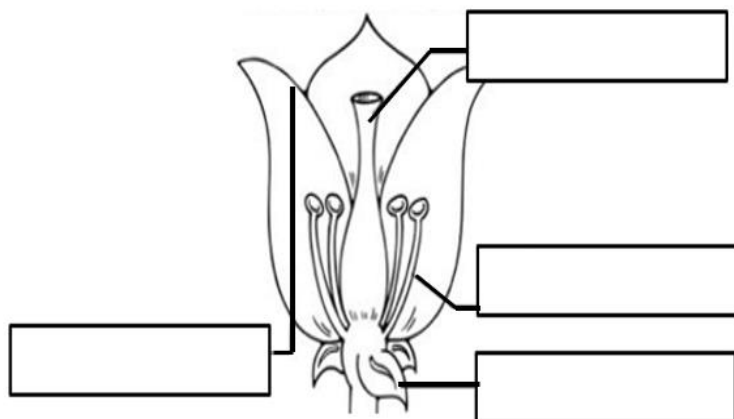


A: _____



B: _____

3. Ajay was given an assignment in EVS. He was asked to label the different parts of a flower and fill in the blanks with the correct answer. Help Ajay to complete his assignment.



_____ are the most beautiful part of a plant. The main function of a flower is to produce _____ and _____. _____ are the male reproductive part of a flower and the _____ is the _____ reproductive part of a flower.